



J-Series

Endeavor



01

I.R. and U.V.

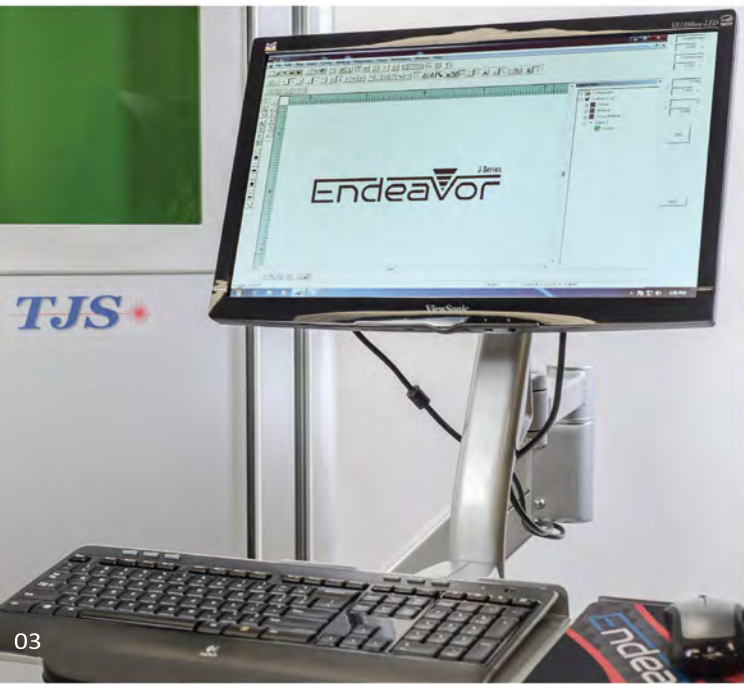
I.R. (1.064nm) and Visible (.532nm) systems are available - material/application specific.



02

Fiber Lasers

Endeavor J-Series MOPA Fiber lasers available in 20W, 30W, 50W, 70W, 100W & 200W Air Cooled systems, include visible "RED" laser for part alignment and pre-mark preview. All Endeavor lasers include a 3-Year Warranty (fiber laser only).



03

Flexible Field Sizes (IMG 01)

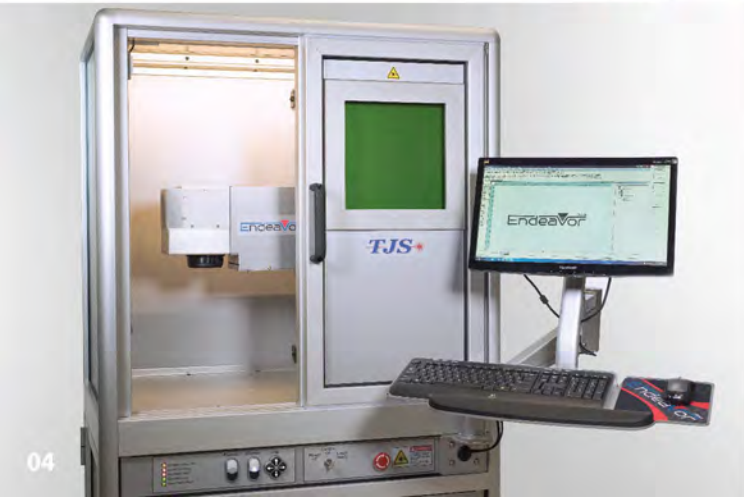
Variety of field sizes available including 45mm x 45mm, 100mm x 100mm, 112mm x 112mm, 205mm x 205mm & 305mm x 305mm. Custom sizes are available and easily accommodated using our industry leading Endeavor Prolase10 operating system.

Ergonomic Controls (IMG 02)

Ergonomic, user-friendly front panel layout and operator controls.

Adjustable Mount (IMG 03)

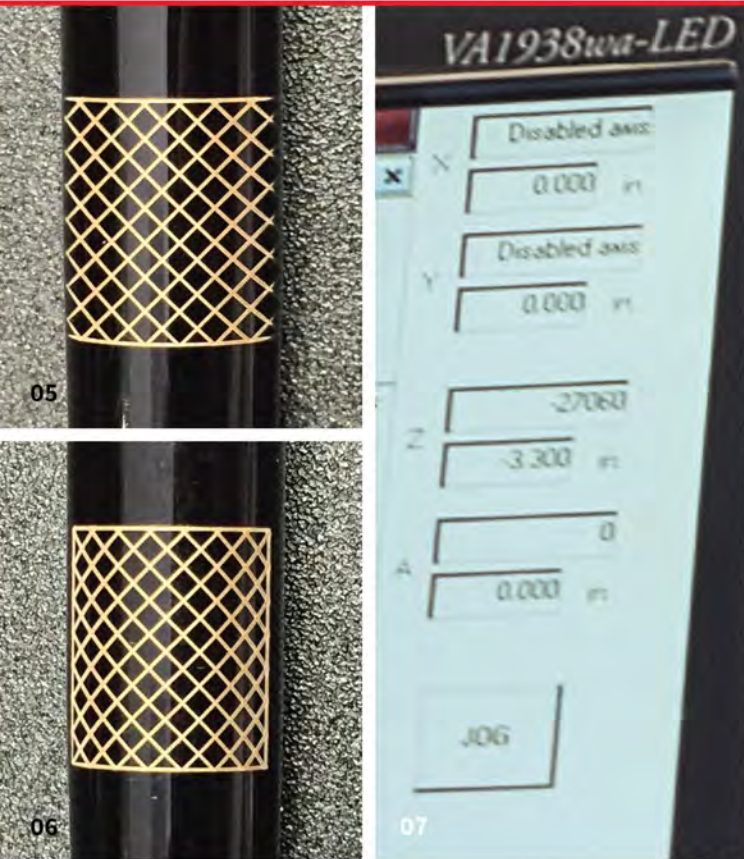
Adjustable monitor/keyboard mount.



04

Ergonomic Workstation (IMG 04)

Ergonomic, contemporary Class 1 Workstation manufactured from high quality U.S. materials incorporating many enhancements as standard features, includes large 11" x 11" operator laser safe viewing window.



Automated

Automated motorized "JOG" Z-Axis.

Incorporating our exclusive "incremental step/delay" feature which allows the operator to move Z-Axis in 0.0005" increments for precise movements and focus. Holding the Up/Down button for the factory set duration will take the Z-Axis out of incremental movement and allow the axis to "run" at full speeds in excess of >10,000 steps per second using our proprietary NEMA 23 and NEMA 34 Servo motors and controller kit. Both the High and Low speeds are factory adjustable. The Z-Axis linear slide is a zero backlash leadscrew offering 0.00015" (4 microns) repeatability accuracy - typical and comes with two adjustable limit switches.

Cylindrical Distortion Correction Feature (IMG 05 & 06)

Our Endeavor Prolase 10 operating systems compensates for cylindrical distortion providing increased radial marking without the need for indexing or human handling.

TJS Axis Server Feature (IMG 07)

TJS Axis Server Feature provides real time position location and adjustments for all motorized axis' using our Endeavor Prolase 10 software and computer display. No need for additional , costly equipment like digital readouts or gauges.

Work Platform (IMG 08)

Large 36" x 24" work platform on a sturdy 0.375" Aluminum plate allows for a variety of fixture sizes and additional equipment i.e. rotary 3-Jaw Chuck indexer.

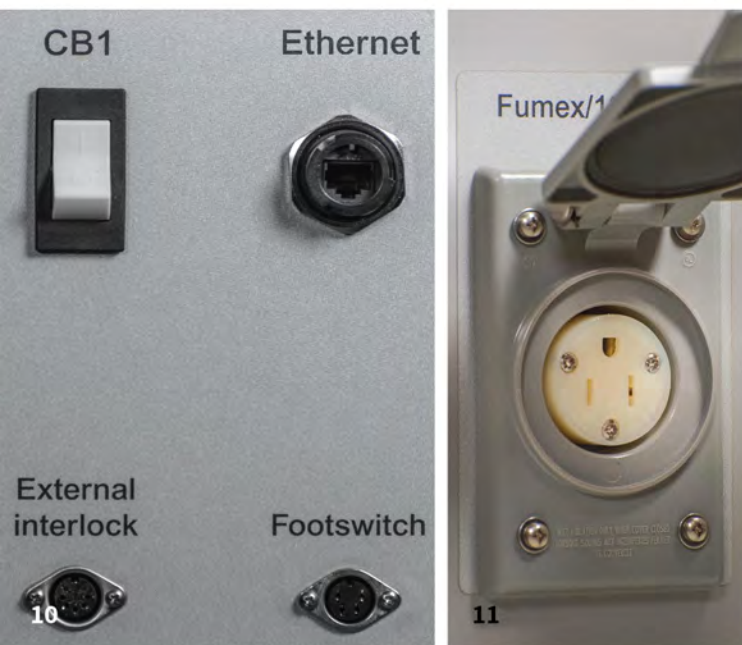




09

Quick Change Beam Expander
Quick change Beam Expander design offers increased flexibility, spot size and marking field.

Enclosure LED Lighting (IMG 09)
Enclosure LED lighting, 2700 Lumens offering homogenous, uniform, 24VDC cost and energy effective saving option for flourescent lighting



10

11

Remote Connectivity (IMG 10)
Remote Connectivity for programming, training and troubleshooting. External Interlock and Footswitch are included.

110VAC Accessory Power Source (IMG 11)
110VAC Accessory power source conveniently located in the workstation for fume extraction or any other use, eliminates the need for extension cables which can create a hazardous condition.



12

Casters (IMG 12)
Heavy duty, industrial leveling and locking casters.

Modular Design
Modular design for simple maintenance and support.